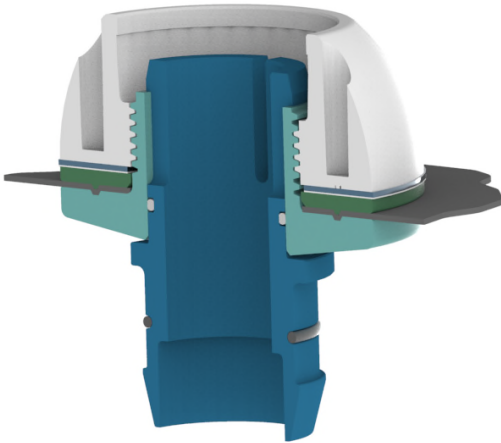


Snap Fit Connector Assembly

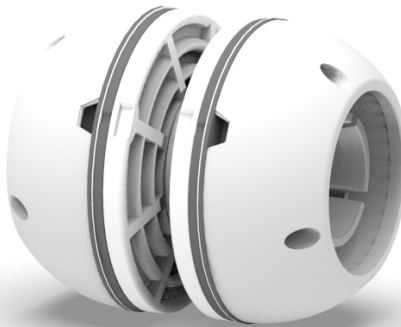
The Snap Fit Connector allows connections to be made between adjoining inflatable chambers, for example tents and boat chambers.



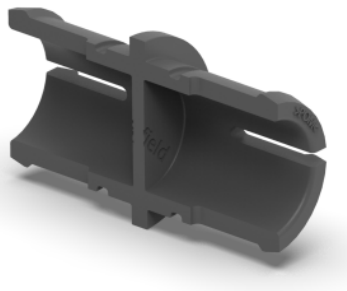
Snap Fit Connector Key attributes:

- Allows high gas flow between chambers.
- No routine maintenance required.
- Robust and leak tight.
- Clamps into a wide range of fabrics.

- Accessories are available to blank off chamber connections or to allow inflation of separate chambers.



Blanking Tube:
Part Number: 1502006
For Assembly including
Blanking Tube and Body: 1408002



Blanking Plug:
Part Number: 1005003
For Assembly including
Blanking Plug and Body: 1211002



Contact Details:

Leaffield Marine Ltd.,
9 Atworth Business Park,
Atworth, Wiltshire, UK SN12 8SB

Tel: +44 (0)1225 899550
Email: sales@leaffieldmarine.co.uk
Website: www.leaffieldmarine.co.uk

ISO 9001 Company

Leaffield
Marine

M-08-CI-SFC-01 Rev 02