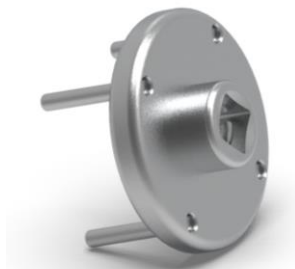


Switchable Transfer Valve Tooling and Products

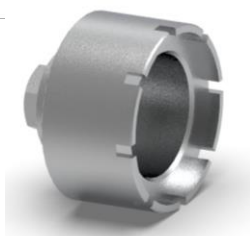
The patented Switchable Transfer Valve (STV), allows intercommunication between adjacent chambers of an inflatable structure, that can be opened or closed to connect the chambers. The valve is opened to allow transfer of air or gas between chambers, providing a single point of inflation.

The STV is for transfer of air or gas between chambers, used along side our C7 and D7 Inflation/ Deflation Valves.

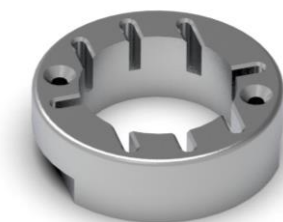
Top Spanner
Part Number: TM2582



Bottom Spanner
Part Number: TM2737



Clamp Block
Part Number: TM3089



C Spanner
Part Number: 19379



Snap Fit Connector Removal Tool
Part Number: TM2747



Refer: Instruction Sheet for STV
Document Number: 1708002

Contact Details:

Leaffield Marine Ltd.,
9 Atworth Business Park,
Atworth, Wiltshire, United Kingdom
SN12 8SB

Tel: +44 (0)1225 899550
Email: sales@leaffieldmarine.co.uk
Website: www.leaffieldmarine.co.uk

ISO 9001 Company

Leaffield
Marine

M-08-CI-STV-02 Rev 01