

**1.0 STORAGE**

1.1 - STORE IN SEALED BAGS.

**2.0 INSTALLATION**

2.1 - IF A DOUBLER IS REQUIRED ON FABRIC WHICH IS SEALED ON BOTH SURFACES IT MUST BE FITTED TO THE OUTSIDE SURFACE OF THE BUOYANCY CHAMBER TO PREVENT LATERAL LEAKAGE. FOR ALL OTHER FABRIC TYPES CONTACT LEAFIELD MARINE.

2.2 - MAXIMUM TIGHTENING TORQUE WHEN FITTED TO 0.3-1.0mm THICK FABRIC IS 27Nm (20lbf.ft). THIS TORQUE HAS TO BE DE-RATED TO 20Nm (15lbf.ft) FOR FABRIC AT THE MAXIMUM RECOMMENDED THICKNESS OF 3.0mm. VALVE ASSEMBLY SHOULD BE RE-TORQUED AFTER AT LEAST 12 HOURS.

2.3 - SPECIAL ADAPTORS ARE AVAILABLE TO ENABLE STANDARD 1/2" DRIVE EQUIPMENT TO BE USED TO TIGHTEN THE VALVE ASSEMBLY. PART No. TM872 MATES WITH THE BODY. PART No. C14898 MATES WITH THE HOUSING.

2.4 - NO LUBRICANTS TO BE USED DURING ASSEMBLY OF THIS VALVE.

2.5 - THE SEALING PLUG, SEALING CAP (SCREW ON TYPE) AND SKIRT ARE AVAILABLE SEPARATELY.

2.6 - VARIOUS OPENING AND RESEAT PRESSURES ARE AVAILABLE. PLEASE SEE SELECTION CHART.

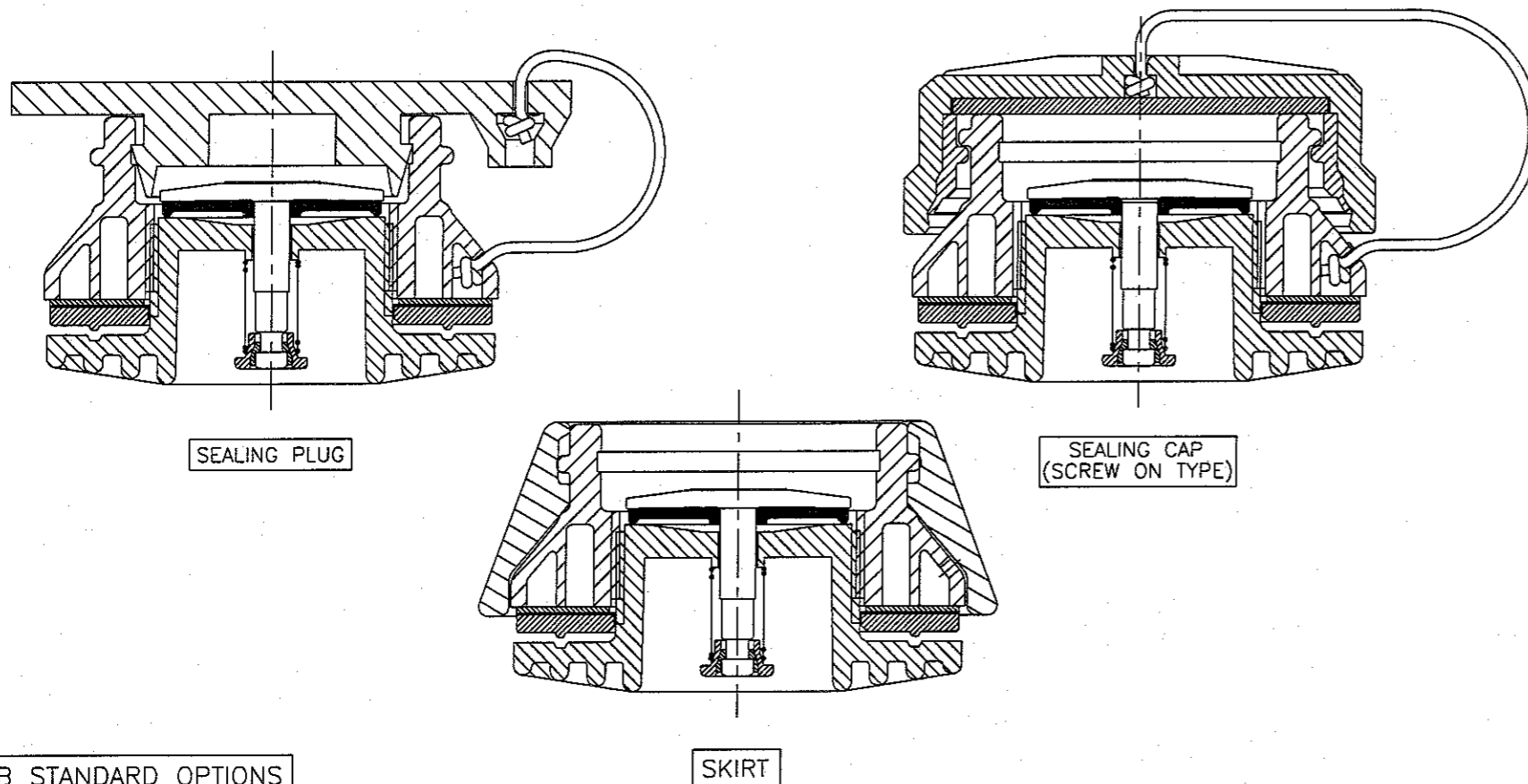
2.7 - IT IS THE USERS RESPONSIBILITY TO ENSURE THAT ANY FLUIDS USED DURING INSTALLATION OR OPERATION ARE COMPATIBLE WITH THIS VALVE.

**3.0 SERVICING**

3.1 - THERE ARE NO USER SERVICABLE PARTS IN THE ASSEMBLY.

3.2 - IF IT IS NECESSARY TO CLEAN THE VALVE ONLY USE HOUSEHOLD DETERGENT AND WARM WATER. DO NOT USE SOLVENT CLEANERS.

FOR FURTHER INFORMATION PLEASE CONTACT  
LEAFIELD MARINE LIMITED



A10B STANDARD OPTIONS  
(SEE NOTE 2.5)

© Leaffield Marine Limited 2012  
THIS DRAWING IS PROTECTED BY COPYRIGHT AND THE INFORMATION CONTAINED THEREIN IS THE PROPERTY OF LEAFIELD MARINE LTD.  
THE DRAWING MAY NOT BE COPIED AND THE INFORMATION CONTAINED THEREIN MAY NOT BE USED OR DISCLOSED EXCEPT WITH THE WRITTEN PERMISSION OF AND IN THE MANNER PERMITTED BY LEAFIELD MARINE LTD.

**Leaffield  
Marine**

UNIT 2, ATWORTH BUSINESS PARK  
BATH ROAD  
ATWORTH  
WILTSHIRE  
SN12 8SB  
TEL: 01225 899550

TITLE  
INSTRUCTION SHEET FOR  
PRESSURE RELIEF VALVE  
A10B STANDARD

DRAWING No.  
1208001

REV. No.  
01