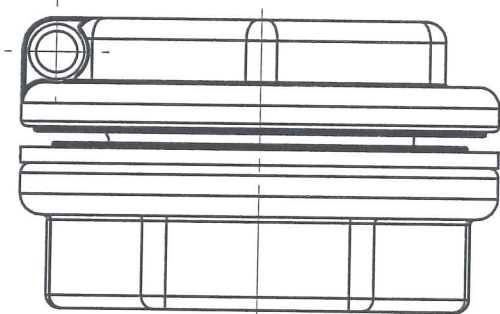
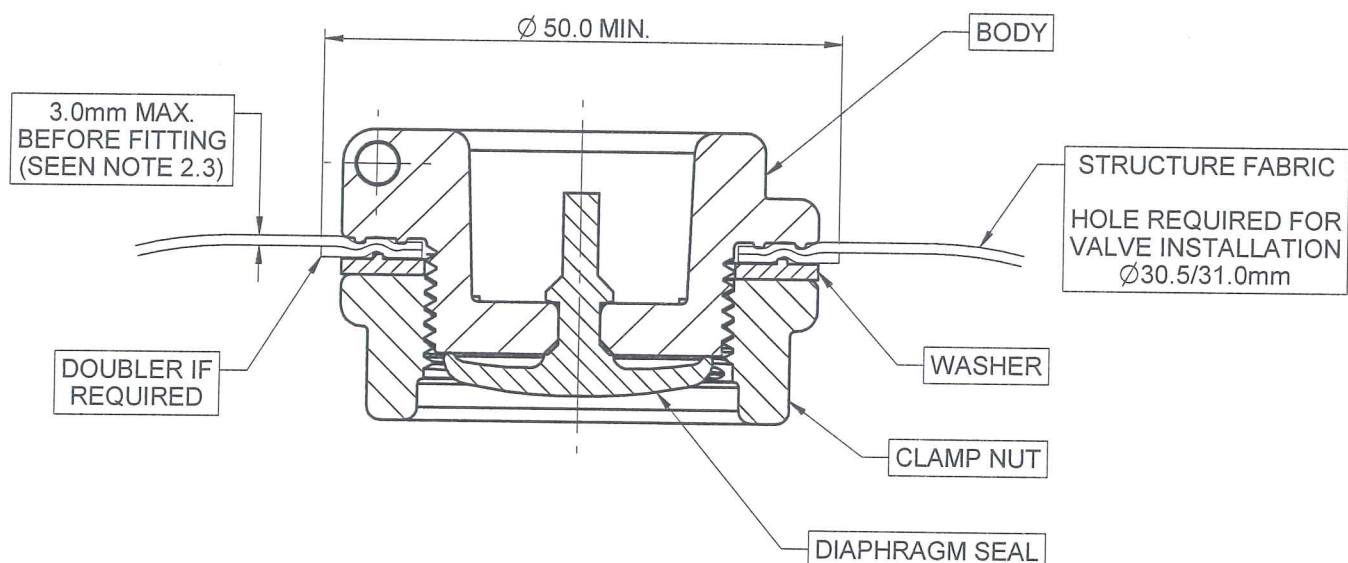
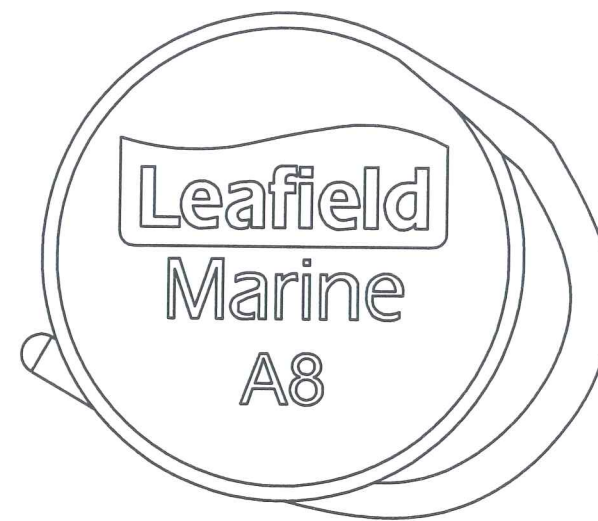


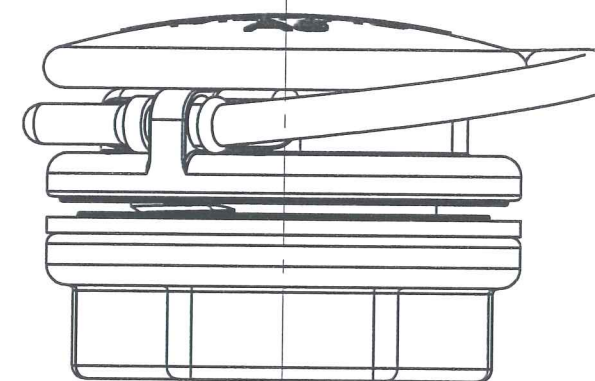
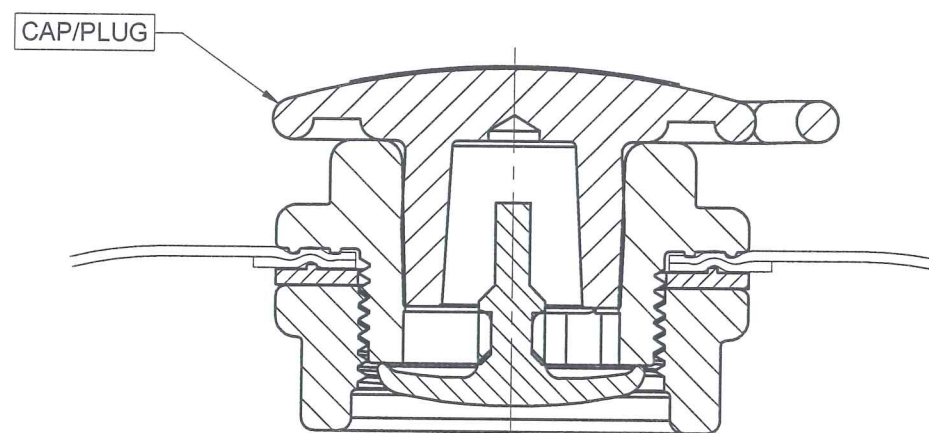
**VALVE APPLICATION PARAMETERS**

Maximum Tube Diameter: 600mm  
 Minimum Tube Diameter: 150mm  
 Maximum Working Pressure: 35kPa (5 PSI approx.)

Maximum tube diameter is normally limited by the construction of the inflatable structure. When either the diameter exceeds 600mm (24 inches) or the pressure equals 35kPa (5PSI) the assembly will require testing.



**A8 TRANSFER VALVE**



**A8 INFLATION VALVE**

ALL PARTS ARE AS THE TRANSFER VALVE BUT WITH THE ADDITION OF THE CAP/PLUG

**1.0 STORAGE**

1.1 Valves must be stored in accordance with BS3574 - Recommendations for the Storage of Vulcanised Rubbers

**2.0 INSTALLATION**

- 2.1 Tightening torque is 16Nm (12lbf.ft). Body & Nut are nominally 36mm A.F. It is essential that a socket spanner is used in order to avoid distorting the nut.
- 2.2 If a thicker fabric is used & the pre-fitting thickness exceeds 3.0mm, the tightening torque must be reduced & the assembly has to be tested for its suitability.
- 2.3 During surface preparation and/or cleaning, care must be taken not to degrade the valve. It is the users responsibility to ensure that the correct process control is employed & that any fluids used during installation or operation are compatible with this valve.
- 2.4 If it becomes necessary to clean the valve, only household detergent & warm water should be used. Solvent cleaners MUST NOT be used.

For Further Information Please Contact  
 Leaffield Marine Limited

**Leaffield Marine**  
 9 Atworth Business Park  
 Bath Road  
 Atworth  
 Wiltshire  
 SN12 8SB  
 01225 899550

TITLE  
 INSTRUCTION SHEET FOR  
 A8 VALVE ASSEMBLY  
 INFLATION OR TRANSFER

DRAWING No. IS828

REV. No. 05

DATE: 24/APR/23